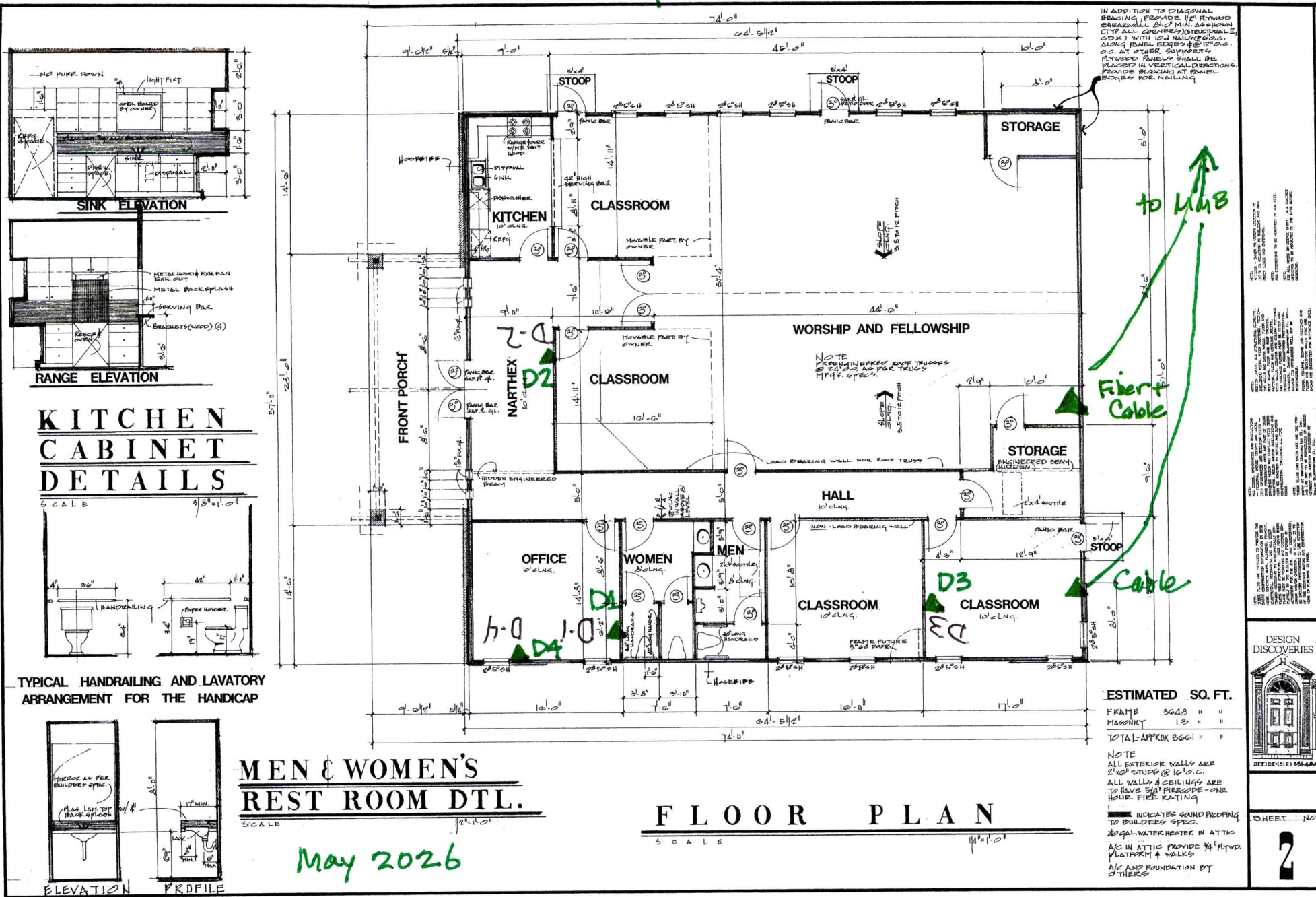


SB Network Drops



IN ADDITION TO DIAGONAL BRACING PROVIDED FOR RETIRED BRACKETS, 2" x 4" MIN. APPROX. CTR. ALL SPANES (STRUCTURAL II, CDX) WITH 1/2" NAILSPACING ALONG PANEL EDGES @ 12" O.C. AT OTHER SUPPORTS. FINISHED PANELS SHALL BE PLACED IN VERTICAL DIRECTIONS. PROVIDE BRACING AT PANEL EDGES FOR NAILING.

NOTE: PRELIMINARY ROOF TRUSSES TO 2" x 4" AND 2" x 6" TRUSS 1/4" SPEC.

to LAB

Fiber Optic Cable

Cable

May 2026