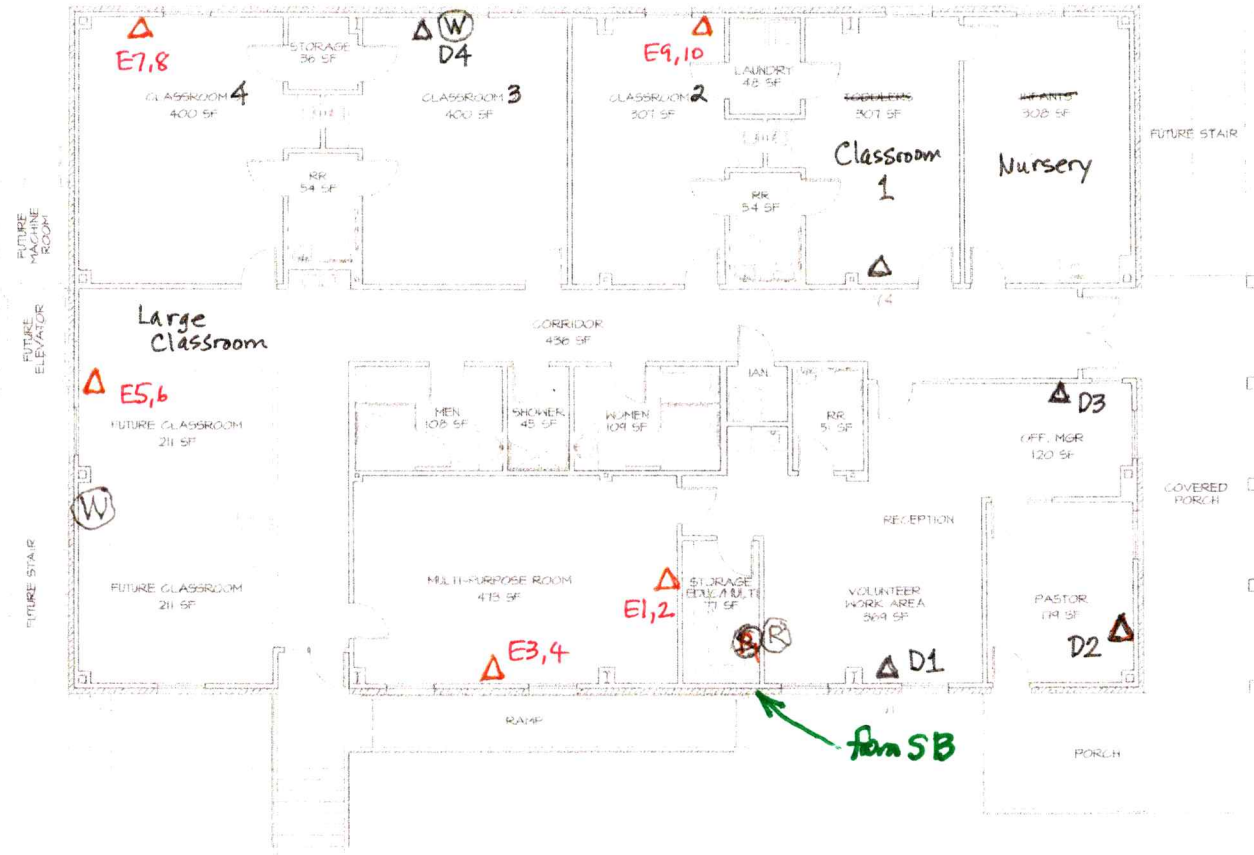


MMB Network Drops



CEDAR PARK UNITED METHODIST CHURCH
 CEDAR PARK, TEXAS
 MAY 1, 2003
 FIRST FLOOR PLAN
 SCALE: 1/8" = 1'-0"

09 May 2026

- △ existing (4), D1-D4, patch panel #1
- △ new (5), E1-E10, patch panel #2
- ⓑ wireless - ~~router~~ / switches / panels
- Ⓦ wireless ~~access point~~ / satellite - 1
- Ⓡ Orbi Main Router

Rev. 3

Rev. 3 Dec 2024

Rev. 2 03 Jun 21

Rev. 1 28 Apr 21

Rev. 0 26 Apr 21

nmh

Patter & Evans Architects, Inc.
 2515 Lake Austin Boulevard
 Austin, Texas 78705
 Phone: 512.522.1100 Fax: 512.522.1192