



*A Spiritual Oasis Committed to Christ,  
to Peace, and to Service*

Cedar Park First United Methodist Church

# Connections

## Newsletter



**The Red Bench™**  
Interfaith Conversations that Matter

### RED BENCH CONVERSATION OCTOBER 17

Over the past few years, Cedar Park First UMC has participated in several Red Bench conversations. Interfaith Action of Central Texas sponsors these Red Bench events as a way of addressing one of the most pressing issues of our time – improving interfaith understanding and civil discourse in our society.

The next Red Bench conversation will be hosted by the Islamic Center of Brushy Creek, 1950 Brushy Creek Road, on Thursday, October 17, from 6:30-8:30pm. You may remember that two years ago, we invited members of the Brushy Creek Islamic Center to several dialogue

**RED BENCH continued on p. 10**

#### ALSO IN THIS ISSUE:

Jesus Rock Stars Corner	p. 2
October Youth News	p. 4
A Child's Haven Happenings	p. 6
Children's Xmas Eve Performance	p. 6
Tables For All Dinner Club	p. 7
Congregations Work Day	p. 7
Church Spending & Finance	p.8-9
Young at Heart Fellowship	p. 10
Church Contacts	p. 11
October Calendar	p. 12



### 24<sup>th</sup> Annual Pumpkin Patch

Submitted by Bob Bowker

This year we will be celebrating CPFUMC 24<sup>th</sup> Annual Pumpkin Patch. We are scheduled to have the pumpkins arrive at 5:00 PM on Sunday, October 13<sup>th</sup>. Unloading of the truck and getting the pumpkins placed on the pallets is quite a laborious task and we would encourage anyone who is able to come to the Church and help us with this task. The more people who participate the easier it will be for everyone.

The Pumpkin Patch will begin opening on Monday, October 14<sup>th</sup> and will be open each day until and including October 31<sup>st</sup>. The schedule for the Pumpkin Patch being open and available shifts for you to volunteer for is as follows; Weekdays we have two shifts, 2:30-5:00 and 5:00-7:30 (dark)

**PUMPKIN PATCH continued on p. 10**

## JESUS ROCK STAR CORNER

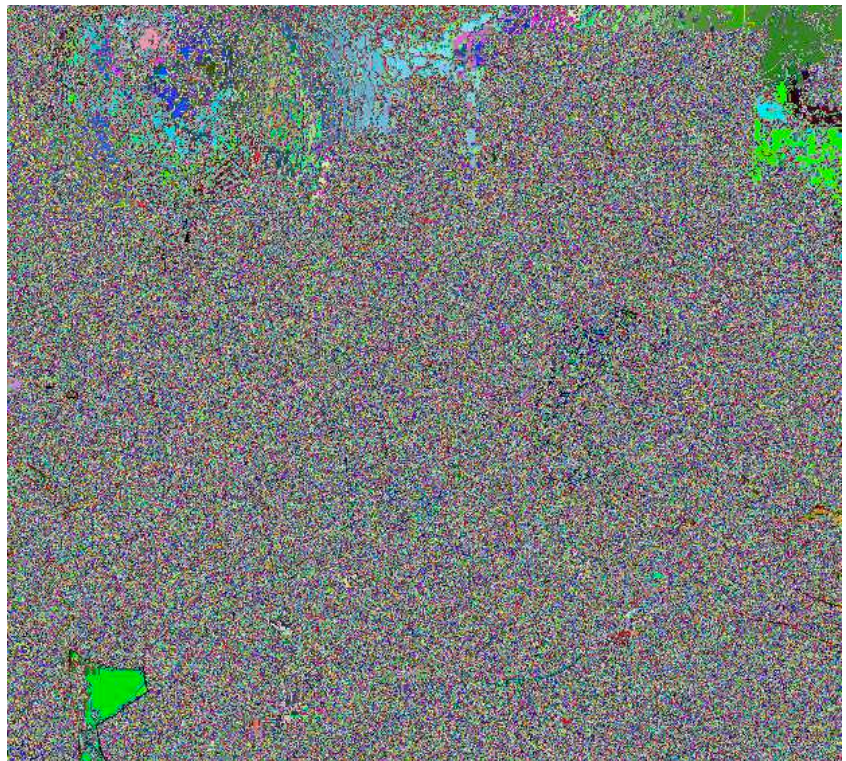
Submitted by Carolyn Smith

We are glad to be back in the routine of school, a time to get serious with our studies. The Jesus Rock Stars have been discussing our relationship with God and how he wants us to be in relationship with him and others. Our studies have guided us to scripture revealing that we are all an important part of God's amazing creation. We are all unique, need each other, and together we make the whole.



**James, Josie, and Kaitlyn decided to end their discussion on sharing by making dream catchers. They are using beads and binding them with glue.**

**The older class discussed how we should help each other. We decided to make a healthy breakfast. Josie, Tony, Kaitlyn, and Gwen made oatmeal with fresh fruit. They made enough to share with Mitchell, Leland, Izzy, Rachell, and James.**



Elizabeth, Leland, Rachel, and James are studying how God gave us all just the right gifts.



Mason, Josie, and Tony are discovering how separately we can accomplish things but together we can do so much more. They are using beads and binding them with glue.

**LOOKING AHEAD:**

EMPOWER: October 19<sup>th</sup>, 5:00 pm to 9:00 pm

A time when all elementary age children get together to demonstrate their gifts from God. All elementary age children are invited to attend. Complete the registration form at [cpfumc.org](http://cpfumc.org).

No charge.

## October YOUTH News

Submitted by Suzette Thorpe Johnson



Speaking of missions - We are headed out this month, **Oct 12-15th, to partner with Mission Border Hope in Eagle Pass.** This long established Methodist mission has served along the border for decades assisting people in crisis and offering hope through education, health, home repair, counseling and more. YOUTH will be doing home repair still needed from a flood a few years back now. We may also have a chance to assist Mission Border Hope with sorting supplies

We are getting a mission trailer! Deepest thanks to the endowment committee and to Shawn Dubler for taking the lead in acquiring a trailer to use for various church ministries especially mission trips. The trailer will be equipped to store and move tools as well as supplies used for mission trips around the state of Texas or beyond. It will be a huge relief to not have to figure out how to pack tools, materials, bedding and suitcases while leaving space for the YOUTH to ride as well. Thanks to the entire congregation for your on-going support of mission trips - to be the hands and feet of Christ is to humble oneself to the call of God.



and possibly meet some of our Border Patrol personnel serving as the front line of compassion. **All are invited to join in our**

## October YOUTH News, continued



**mission.** It is an excellent small scale trip to dip your toe in the mission thing AND you can stay in a hotel if you prefer instead of sleeping on an air mattress - just contact Pastor Suzette ( [suzette@cpfumc.org](mailto:suzette@cpfumc.org) ) Everyone else, we ask you to please be in prayer with us as we step into our servant roles.

Schedule:

Sat Oct 5th - YOUTH are joining in Church work morning. We will be hopefully moving tools into the new trailer; painting the shed; cleaning up the YOUTH room (formally known as the library now reclaimed as the YOUTH room) and building benches to raise funds for the HOLY LANDS trip in about two years.

Sunday, Oct 6th lunch at noon, modern worship in youth room then MISSION: collect food for Hillcountry Food

bank while handing out flyers for the pumpkin patch. does anyone have a large wagon we may use to put the collected food items in as we walk through the neighborhood?

Sat Oct 12-15th Mission Border Hope in Eagle Pass. You can still join in the trip - open to all church members.. \$75 per person; scholarships available. Never let your finances keep you from participating in God's kin-dom!

NO YOUTH Sunday, Oct 13th

Friday Oct 18th: Michael W Smith Concert - still have a few tickets available. Please email Pastor Suzette ( [suzette@cpfumc.org](mailto:suzette@cpfumc.org) )

Sun Oct 20th AND Oct 27th: lunch then PUMPKIN PATCH - We will have fun hosting the pumpkin patch. Be on the look out for a **special photo booth setting** as a fund raiser for the HOLY LANDS trip as well as a **DRUM CIRCLE** where people of all ages will be invited to participate in making wonderful music which echoes our heartbeat.



## A Child's Haven Happenings

By Lesley Foyt, Director

A Child's Haven had a great start to the new school year! The children have done an excellent job of settling back into the school routine. It is so nice to see so many smiling faces again! During September the kids learned about the five senses. They also learned about their classmates and families with our All About Me week. We had our

annual Coffee with the Pastors where parents were able to visit with Pastors Suzette and Peter. This always is such a nice time of fellowship for everyone.

Our Fruit of the Spirit this month was Kindness. Ephesians 4:2 says: "Be kind and compassionate to one another..." Throughout the month teachers read bible stories and talked about God's kindness and love for all people and how we can be more like him. I saw many instances of children showing kindness to their new friends and teachers, including giving hugs and using kind words to each other. The Fruit of the Spirit for next month will be Patience.

In October we will be having our Teddy Bear Picnic on October 3<sup>rd</sup>. During that week the kids learn about forest animals, and we then have a picnic style lunch with teddy bears. One of our favorite events, visiting the pumpkin patch, will be coming up the last week of October. The kids love dressing up for Halloween and hearing a story in the patch. It is so much fun for the kids and families! We are looking forward to another great month of love and learning at A Child's Haven!

Blessings,

Lesley

### Christmas Eve performance: ***Away From A Manger, A Christmas Whodunit!***

Dec 24, 5:00 pm



Rachel, Mason, Josie, and Kaitlyn have been given their roles and began marking their scripts. We need you to help us solve this mystery. Plan to join us **Christmas Eve, 5:00 pm** to find out, "***WhoDunIt***".



## First Call for Dinner

Introducing

# Tables for All

Submitted by Carolyn Smith

### Do I Know You?

### Do You Know Me?

We attend church together, we greet each other, say “How are you?” But how well do we know each other?

I invite you to sign up for **Tables for All**. Once each quarter you will be paired with a group of about six people, have dinner, and talk. There is no lesson plan, no studying, no test afterward, just good food and conversation.

Please complete the green signup form on the back table of the sanctuary and place in the collection plate. Soon you will receive a call or email from your host to plan the dinner. You will be asked to bring a dish. If you don't cook, no worries, the store-bought items are also very tasty.

**Let's Get To Know Each Other? SIGN UP TODAY.**

## Congregation Work Day October 5th

Twice a year in the spring and fall, the Trustees of our church sponsor a Work Day. Work Days are an opportunity for members and friends of the congregation to help out with chores and tasks associated with our buildings and property. The Fall 2019 Congregation Work Day will be on **Saturday, October 5, from 9am until noon**. There will be a list of tasks available in early September and posted in the Narthex. Please help out as you can by volunteering for a task and completing it at a time convenient to you. You don't have to be there on October 5 to volunteer for a task. More detailed information will be available at the Sunday worship service on September 29<sup>th</sup>. If you have any questions about the Work Day, please contact Neil Howard at [nhowardtx@gmail.com](mailto:nhowardtx@gmail.com).



# This Little Church Is A “Mighty” Little Church

Submitted by the Stewardship Ideas Committee

Our Stewardship Ideas Committee was charged with coming up with a Narrative Budget. So instead of showing the Congregation where we spent the money using Excel Spreadsheets (six pages of ten-point font spread across every inch of the 8.5”x14” paper), we took the notion literally. First, we took the budget line items and alphabetized them. We attributed each number associated with the item as a percentage of total budget making the tiniest slices of budget imaginable. They were all there and then some - at one point we had 104% of budget. One team member even said, “if this is just another way to show a spreadsheet, I’d rather see the numbers.” More discussion followed.

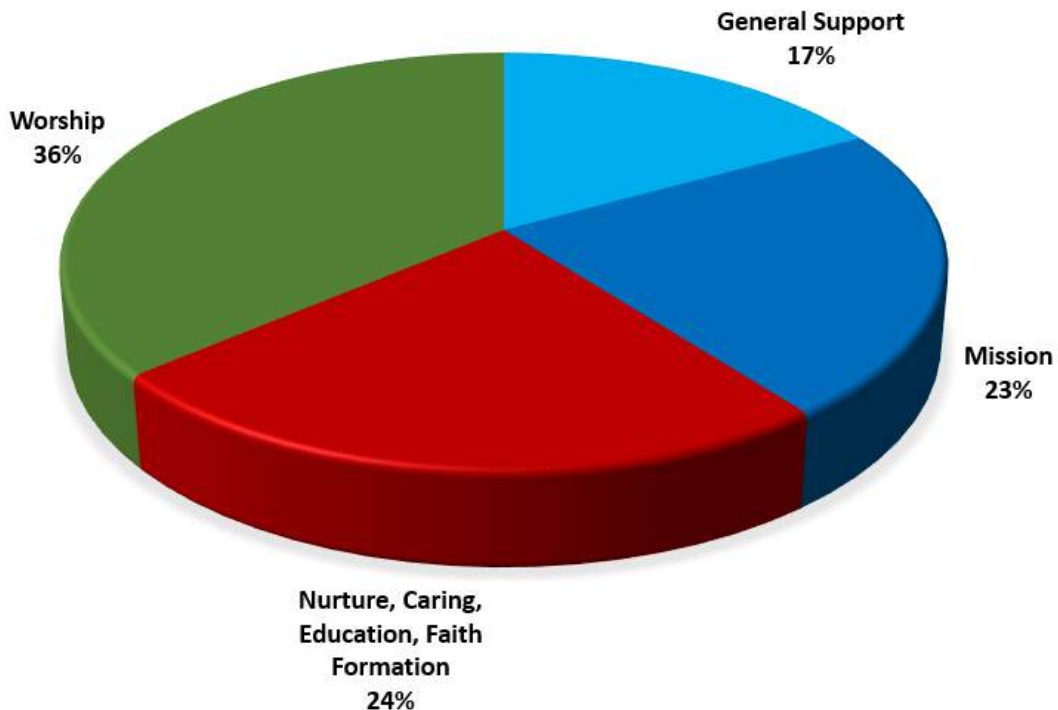
What we needed was a breakthrough moment.

Could the accountants on the Committee figure out a better way to showcase our budget numbers without the mindboggling details? Of course, they could. What about histograms or pie charts? (Who doesn’t like pie?)

Let’s see what happens when we take all the numbers in the budget (including proportionately spreading salaries and building costs by time spent or used) and then allocate them into some understandable categories: Worship, Mission, Nurture and General Support.

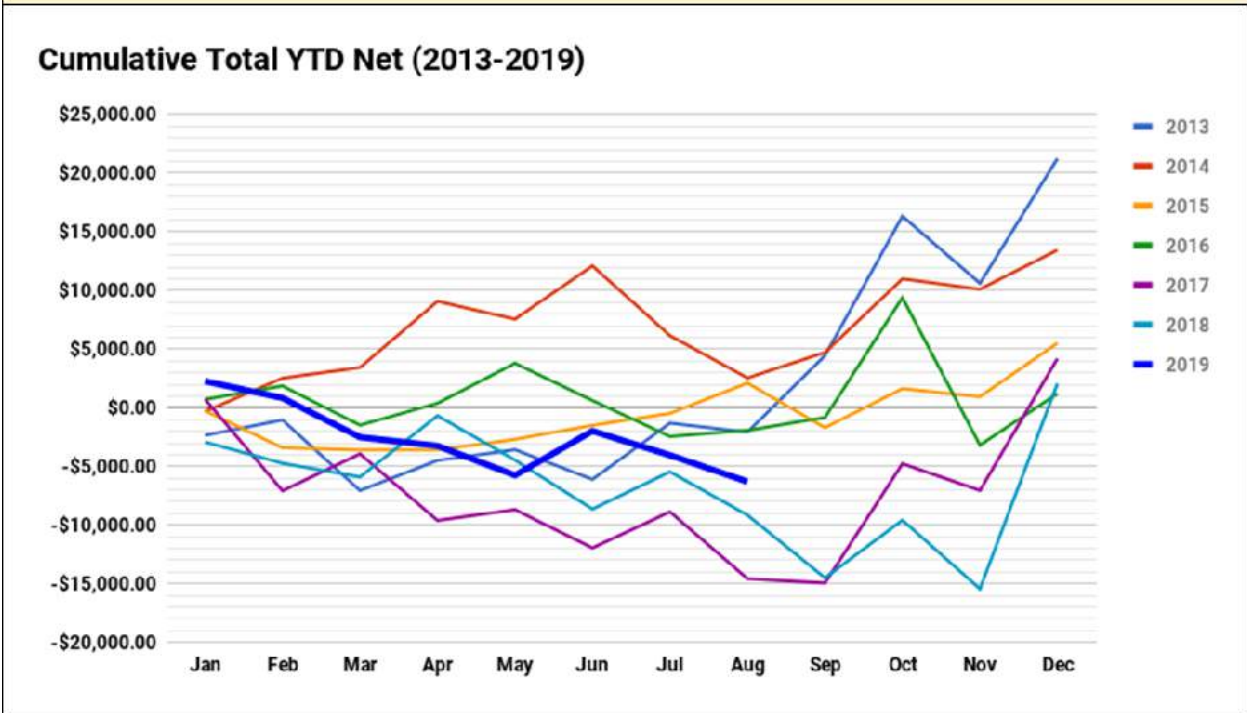
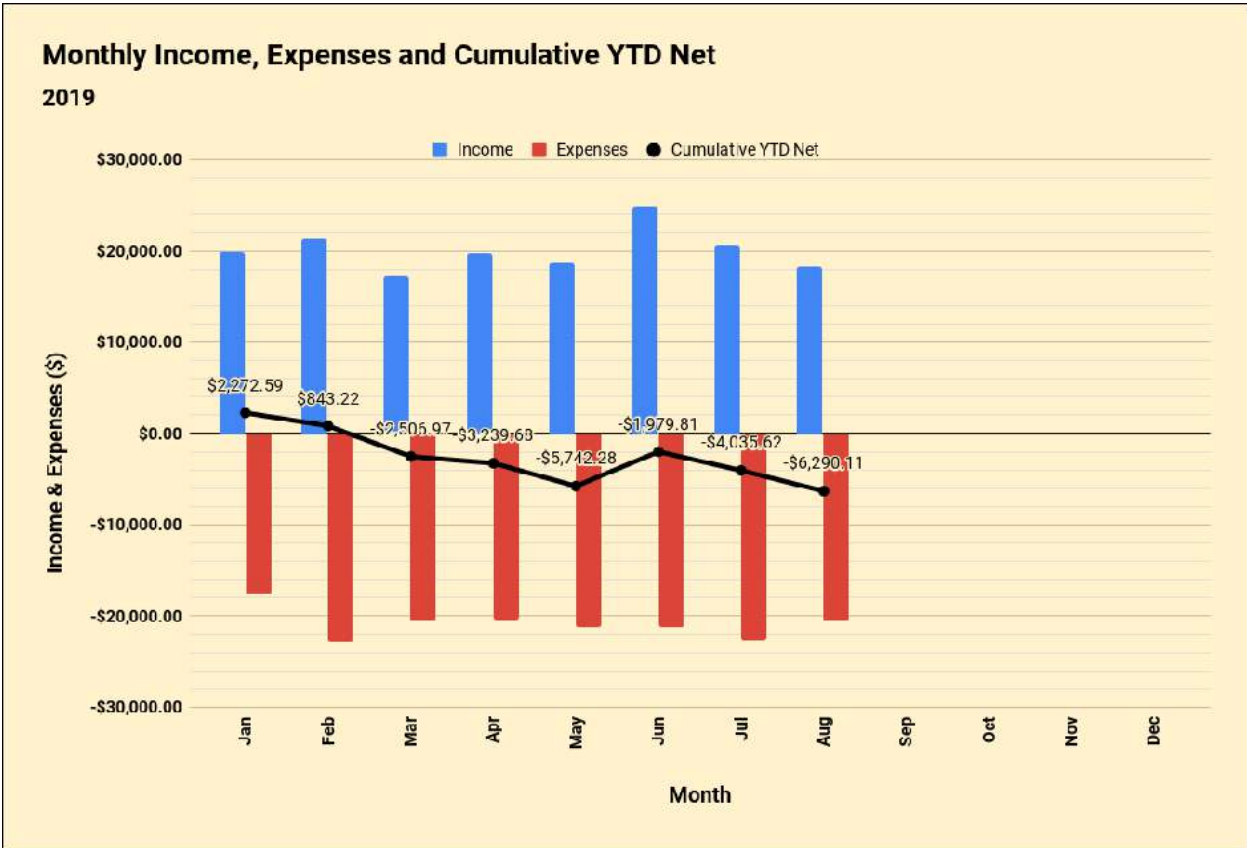
The result is a lovely budget “pie” that helps everyone understand at one glance where all our money is spent. You might even say we are a “well rounded” church when you look at the results:

**Cedar Park First UMC**  
*Where your money goes by ministry area*





# Cedar Park First United Methodist Church Financial Information Through August 2019



## YOUNG AT HEART TO MEET OCTOBER 30

Young at Heart is the church's monthly fellowship group. We'll be meeting again on Wednesday, October 30 at 11:30am in the Sanctuary. Please bring a salad or dessert to share. After lunch, Roger Temme, formerly of The Care Communities, now with AGE of Central Texas, will be bringing us a stimulating message linking the writings of Henri Nouwen with the challenges and opportunities of aging. Please make plans to join us for a wonderful time of fellowship and learning.

### **RED BENCH continued from p. 1**

sessions over the stories in the book of Genesis which also occur in the Quran. It will be so lovely to renew our acquaintance with some of the people we met back then.

The topic for this Red Bench conversation will be "Forgiveness." The event begins with a light vegetarian meal, followed by a moderated small group discussion. The format is a structured conversation around a table, "hosted" by one or two table hosts. Participants are invited to share from their personal experiences and listen with their hearts. Please make plans to participate in this wonderful opportunity for dialogue and learning.

### **PUMPKIN PATCH continued from p. 1**

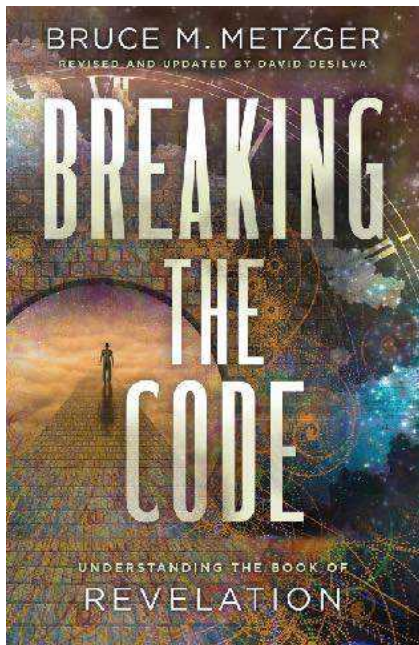
Weekends we have three shifts, 12:00-2:30, 2:30-5:00, and 5:00-7:30 (dark)

For your convenience we have three ways for you to sign up to volunteer for one or more of these shifts, they are;

The CPFUMC website has a button on the opening page that will take you to [signup.com](http://signup.com) where you can identify which shifts are available. Facebook will also have a similar method, taking you to the [signup.com](http://signup.com) site. For those of you who would prefer not to use a computer or your phone there is a pumpkin cutout with a signup sheet on a large orange poster located in the narthex.

In years past this was a project Bonnie organized and those are big shoes for me to fill in doing this for the first time, so I can use all of the assistance I can get.

If anyone has any questions you can see me at Church, call me at 512-771-1680 or e mail me at [bob927bowker@gmail.com](mailto:bob927bowker@gmail.com)



## PASTOR PETER LEADING A STUDY OF THE BOOK OF REVELATION

The Book of Revelation contains passages of great beauty and comfort, as well as passages that strike the casual reader as bizarre, bewildering, and sometimes frightening. How are readers today to discern God's message in this peculiar part of the Bible? Beginning September 12, Pastor Peter will be leading a 7-week study of this enigmatic book, utilizing Bruce Metzger's book *Breaking the Code: Understanding the Book of Revelation*. The study will take place at Maple Ridge Retirement Center, 1531 Juliette Way, on Thursday mornings at 10am. Please indicate your interest in participating in this study by signing the sign-up sheet on the back table of the Sanctuary. Metzger's book will also be available for \$12. Please consider joining us as we explore this fascinating book.

facebook

Follow us on Facebook. Search for **Cedar Park First United Methodist Church** and you can like and share our posts. To have your upcoming events posted on the CPFUMC's Facebook page, please email information to Colleen Litaker, [colleen.litaker@gmail.com](mailto:colleen.litaker@gmail.com)

Don't forget once your event is over, send your photos and videos to Colleen so she may also post the information.

Find us online at [cpfumc.org](http://cpfumc.org)  
or call the church Tues-Thurs between 9 and 2  
at this phone number:  
(512) 335-9540

Want to contact a Church Leader or submit  
something for a future Newsletter?

Pastor Peter Castles  
Assoc. Pastor/Youth Dir. Suzette Thorpe Johnson  
Church Council Chair Steve Howard  
Music Director/Pianist Jodi Blount  
Children's Haven Director Lesley Foyt  
Newsletter Editor Jill Lundstrom



[peter@cpfumc.org](mailto:peter@cpfumc.org)  
[suzette@cpfumc.org](mailto:suzette@cpfumc.org)  
[showard746@gmail.com](mailto:showard746@gmail.com)  
[jodi\\_blount@hotmail.com](mailto:jodi_blount@hotmail.com)  
[director@childshaven.net](mailto:director@childshaven.net)  
[lund121@me.com](mailto:lund121@me.com)

# CPFUMC Calendar October 2019

Cedar Park First United Methodist Church, CARE Calendar, Child's Haven Events, Choir, Oct 2019 (Central Time - Chicago)  
 CP1UMC Youth, Other Groups, Pumpkin Patch, SCOUTS, United Methodist Men, United Methodist Women

Sun	Mon	Tue	Wed	Thu	Fri	Sat
29 8:30am - Worship 9:45am - Sunday 10:45am - Worship 12pm - Youth @	30 12pm - Talley Piano 2:15pm - ESL - GED - 6:30pm - Webelos 7:30pm - Centering	1 9:30am - Morning 10am - Bible Study 11am - Prayer Shawl 3:15pm - Talley 6:30pm - Wolves @ 7:30pm - AA Men's	2 1pm - Easy Line 3:30pm - Talley 6:30pm - Buckles	3 9am - Coffee with 9:30am - Tai Chi - 10am - Revelation @ 11am - Tai Chi 11:30am - Teddy 3:30pm - Talley 5pm - GS #40530 @	4 8:30am - ESL - GED - 6:30pm - Alcoholics	5 9am - Congregation
6 8:30am - Worship 9:45am - Sunday 10:45am - Worship 12pm - Youth @	7 12pm - Talley Piano 2:15pm - ESL - GED - 6:30pm - TRUSTEES 7:30pm - Centering	8 9:30am - Morning 10am - Bible Study 11am - Prayer Shawl 3:15pm - Talley 7:30pm - AA Men's	9 1pm - Easy Line 3:30pm - Talley 5:15pm - GS #40530 6:30pm - Buckles	10 9:30am - Tai Chi - 10am - Revelation @ 11am - Tai Chi 3:30pm - Talley	11 8:30am - ESL - GED - 6:30pm - Alcoholics	12 8am - Youth 9am - UMW Meets
13 Youth UMaArmy-Eagle Pass @ Pastor Suzette 8:30am - Worship 9:45am - Sunday 10:45am - Worship 12pm - NO YOUTH 5pm - PUMPKINS 5pm - Pumpkins	14 9am - ACH- NO 12pm - Talley Piano 2:15pm - ESL - GED - 6:30pm - FINANCE 7:30pm - Centering	15 9am - ACH-NO 9:30am - Morning 10am - Bible Study 11am - Prayer Shawl 3:15pm - Talley 6:30pm - GS	16 9:30am - Mbrshp 1pm - Easy Line 3:30pm - Talley 6pm - Stewardship 6:30pm - Buckles	17 9:30am - Tai Chi - 10am - Revelation @ 11am - Tai Chi 1:30pm - GS #40530 3:30pm - Talley	18 NEWSLETTER Input 8:30am - ESL - GED - 6:30pm - Alcoholics	19 9:30am - P.E.O. "JX" 5pm - EMPOWER @
20 8:30am - Worship 9:45am - Sunday 10:45am - Worship 12pm - Youth @ 3:30pm - Worship @	21 12pm - Talley Piano 2:15pm - ESL - GED - 6:30pm - COUNCIL 7:30pm - Centering	22 9:30am - Morning 10am - Bible Study 11am - Prayer Shawl 3:15pm - Talley 7:30pm - AA Men's	23 1pm - Easy Line 3:30pm - Talley 5:15pm - GS #40530 6:30pm - Buckles	24 9:30am - Tai Chi - 10am - Revelation @ 11am - Tai Chi 3:30pm - Talley	25 8:30am - ESL - GED - 6:30pm - Alcoholics	26
27 8:30am - Worship 9:45am - Sunday 10:45am - Worship 12pm - Youth @ 3pm - Soul Lift	28 12pm - Talley Piano 2:15pm - ESL - GED - 7:30pm - Centering	29 9:30am - Morning 10am - Bible Study 11am - Prayer Shawl 3:15pm - Talley 7:30pm - AA Men's	30 11:30am - Young at 1pm - Easy Line 3:30pm - Talley 6:30pm - Buckles	31 9:30am - Pumpkin 9:30am - Tai Chi - 11am - Tai Chi 3:30pm - Talley	1 8:30am - ESL - GED - 6:30pm - Alcoholics	2