



*A Spiritual Oasis Committed to Christ,
to Peace, and to Service*

August 2018

Cedar Park First United Methodist Church

Connections

Newsletter

Students' Reflections on UM ARMY: United Methodist Action Reach-Out Mission by Youth

When I first arrived there, I didn't know what to do and didn't know other people. My friends from church and I thought this is going to be the worst week, since we all can be shy sometimes. The first day we all stuck together before we all got split apart. We didn't know anyone and we all walked behind the group lonely. At the end of the first day, we started getting new friends from other churches. I didn't think I could make friends that fast. After the third day, everyone had friend group and they all felt like family to us and its like everyone knew each other. It felt like God planned this. Everyone shared laughs, shared smiles, and shared memories. At the end of the week, it was hard to leave each other, a lot of us started crying and everyone hugged, but at the end of the week, we all had a fun time and we will always be one big happy family.

--Keyla Creel

I had an amazing time, God is big and powerful to make this amazing mission team work together. God is good to make me have the opportunity to participate spiritual and grow closer to God. It was an amazing how the children of God were working together and blessing the town of Gonzales. When I was in church in Gonzales, I was thinking of my mother-in-law, if she didn't leave us, we wouldn't be at this

mission and at church this day. Our church is best heritage she left us.

--Anabel Creel

This year I went to UM Army. When I got there I thought I was not going to have fun. The first night I was freaking out because I missed my parents, but the next few days I learned to get over it and love the day. I learn a lot of peoples' names and I made a lot of friends. When it was time to leave I got so sad because I made a lot of new friends. We all took a group picture and made a group chat and we have been talking to each other since then. It was so much fun.

--Ashlyn Short

I had a fun time at mission trip. I made a lot of new friends! I learned more about God. I had fun working and helping the

[UM ARMY continued on p. 6](#)

ALSO IN THIS ISSUE:

Jesus Rock Stars	p. 2
Posaunenchor Planning	p. 3
Tax Free Giving From IRA	p. 4
Book Club Gathering	p. 4
Park Street Landscape Project	p. 5
Tuesday Morning Bible Study	p. 7
August Events Calendar	p. 8

JESUS ROCK STAR CORNER

Submitted by Carolyn Smith

These amazing young children have been studying how Jesus wants everyone to love and take care of each other. We read the story of the forgiving and unconditional love of a father.



After discussing the story of the Ten Lepers, Rachel shows how to care and love others. She is using her Boo Boo Bunny to help relieve Addison's pain.



The girls made get well cards for people who are not feeling well. As well as Mark is helping the girls make Boo Boo Bunnies.

Who knew a washcloth, google eyes, and an ice cube would give so much relief. These girls will be happy to help you make a Boo Boo Bunny.

EMPOWER in the Pumpkin Patch, this is a time when we want children to show one of their many talents. They have the opportunity to perform in front of their peers for 5 minutes. They can sing, dance, perform gymnastics, tell jokes, demonstrate how to make something, or other skills. Please plan to attend, **Saturday, October 13th at 6:00pm**. This event is free to all children. Please encourage your child to bring their friends. Registration forms will be available on the church website.

Adult co-leader needed. We need someone to help with the 3rd to 5th grade Children's Sunday School Class. Looking for someone who has already completed the Child Safety Training or be willing to complete the training online. Please contact Carolyn Smith or Bonnie How if you are interested.



Posaunenchor Planning is Underway – Hosts Needed

Posaunenchor, a brass band from Hamm, Germany will be here in less than 3 months, October 19-21. We know now that there will be 32 people in their group, equally split between males and females with ages from 12 to early 60s. There will be 7 teenagers and 3 in their 20s along with 22 older adults. Georg Turwitt is their leader. They come from Hamm, a city of about 180,000 in the German state of North Rhein-Westphalia. This is in the western part of Germany near the border with Holland. Hamm is north of Bonn and Cologne. I have known Georg and others in the band for over 29 years. They are all delightful, fun-loving people. Although they have visited the US several times, only a handful of them have ever been to Texas, so this will be a completely new experience for them as well as for us.



Their home church is St. Pancras church in the Mark section of Hamm. It has been there since the 1100s. Originally Roman Catholic, it became Lutheran (the call it “Evangelical”) in 1606. Their Posaunenchor has been organized for over 75 years in Hamm and there are several other Posaunenchor in Hamm as well. They play music for worship services in their church and also for civic events in Hamm such as Christmas Market. Their English is excellent because it is taught in their schools, so language is not a problem.

You can participate in the Posaunenchor visit and enjoy a wonderful cultural exchange by participating as a Host, a Guide, a Driver or a Lunch provider. We have a full schedule planned for our guests including a quick tour of Cedar Park, a visit to the Texas state capitol in Austin and Texas BBQ and Tex-Mex meals. They will be playing an afternoon concert at the Highland Estates and will play at both worship services in our church on Sunday, October 20, before departing Sunday afternoon for New Orleans via Lake Charles.

Look for the sign-up sheets to appear on the back table in a couple of weeks. There will more information in a Mission Moment on August 5. This is a great opportunity for you and your family to make a friend. Maybe your friendship will last 29 years or even more!

Tax-Free Charitable Giving from Your IRA

Submitted by Neil Howard

Do you have an Individual Retirement Account (IRA)? Are you over 70 ½ years old?

If you answered “Yes” to both of these questions, then you are eligible to make tax-free charitable contributions from your IRA. Here is how it works:

If you are over 70 ½ years old and you have a regular IRA (not a Roth IRA), the government *requires* you to withdraw a portion of your IRA every year. It doesn't matter if you are retired or not, you still have to withdraw a certain amount. The IRS calls this amount a Required Minimum Distribution (RMD). You can't just let your IRA investment grow indefinitely. The government wants to finally tax the tax-deferred income that you socked away during your wage-earning years. Your RMD is taxable.

However, IRS rules allow you to use a portion, or even all, of your RMD for charitable contributions tax-free. The IRS calls this tax-free charitable contribution from your IRA a Qualified Charitable Contribution (QCD). If you are really well-off, you can actually make tax-free charitable contributions from your IRA up to \$100,000 per year. The QCD counts toward your RMD, but the QCD portion is tax-free whereas the rest of your RMD is taxable. The QCD can be any amount you choose up to your entire RMD or \$100,000, whichever is less.

Going with the QCD is actually a better deal than taking the entire RMD, making a charitable contribution and then claiming an itemized deduction for the charitable deduction. This is because the QCD is never considered as income since it is sent directly from your IRA to the charitable institution. Thus, your overall income, and thus your taxable income is lower.

You can set up a QCD to make tax-free withdrawals from your IRA on a recurring basis, for example, monthly, or in one shot every year. You can set up QCDs for more than one charitable organization. The organization receiving your QCD must be a 501.c.3 charitable organization recognized by the IRS, for example a church like CPFUMC.

This is all described on the IRS website at <https://www.irs.gov/retirement-plans/retirement-plans-faqs-regarding-iras-distributions-withdrawals> and in IRS Publication 590-B. Consult with your IRA holder or financial adviser to set up a QCD.

An evening with author Katherine Reay to discuss any or all of her novels.

Katherine's novels include:

Dear Mr. Knightly

Lizzy and Jane

The Bronte Plot

A Portrait of Emily Price

The Austen Escape

A bit about Katherine...

Katherine Reay is the award-winning author of *Dear Mr. Knightly*, *Lizzy & Jane* and *The Bronte Plot*, an ALA Notable Book Award Finalist. Her latest novel, *A Portrait of Emily Price*, released in November 2016 and received Starred Reviews from Publishers

Weekly, Library Journal and a Romantic Times TOP PICK! *The Austen Escape*, Katherine's next story, will release in November 2017. All Katherine's novels are contemporary stories with a bit of classical flair. She holds a BA and MS from Northwestern University and is a wife, mother, rehabbing runner, former marketer, and avid chocolate consumer. After living all across the country -- 9 years in Austin, TX -- and a few stops in Europe, Katherine now happily resides outside Chicago, IL.

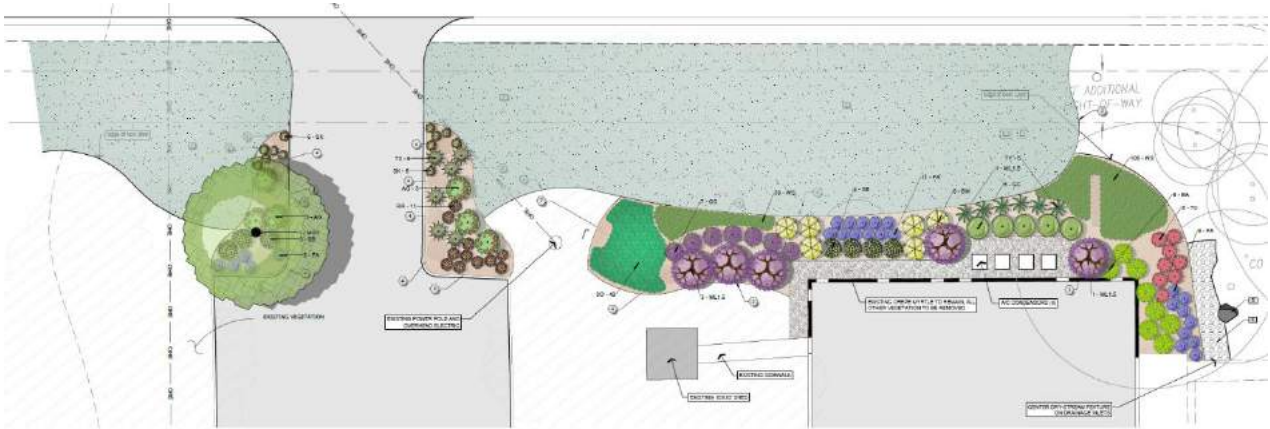
Join us

Wednesday, October 3 at 6:30 p.m.!

Park Street Frontage Landscape Project

Submitted by Neil Howard

The Trustees finished reviewing the preliminary landscape plan and gave comments to Blair Landscape Architecture (BLA) in June. BLA has produced the final landscape plan shown below:



Our Park Street Frontage landscape plan features:

- A Monterey Oak planted on the west side of the MMB driveway
- Five Texas Mountain Laurel ornamental trees planted as a shield for the shed and on the north side of the sanctuary building near the HVAC units.
- 107 native Texas shrubs including ornamental grasses and flowering plants.
- Webberville Sedge and Wood Oats used as ground cover (194 plants).
- Renovating and over-seeding the 5185-sf front lawn with Blackjack Bermuda to rejuvenate it.
- 600- to 1000-pound limestone boulders to discourage parking in the new planting beds on the east and west sides of the Multi-Ministries Building driveway. [We have some of these onsite already. We just have to find them and move them to where we want them. Savings depends on whether the cost to extract and move our own boulders is greater than the cost to purchase and deliver new ones].
- Limestone rip-rap and heavy-duty landscaping fabric along the north side of the sanctuary building to discourage vegetation growth and allow a path for maintenance access to the HVAC units.
- Drip and sprinkler irrigation to keep the plants alive and flourishing.
- All existing Oak trees will be retained. The existing Crepe Myrtle on the north side of the sanctuary building just outside the Youth Room will be retained as will the Afghan Pine on the east side of the sanctuary building.
- A low limestone slab bench made from existing limestone slabs onsite will be built.

A color rendition of the complete final landscape plan is now available online and it is posted on the wall in the church lobby near the coffee table. A PDF copy and more project details are posted at the project web page online at <https://cpfumc.org/BLA>.

[LANDSCAPE continued on p. 6](#)

LANDSCAPE continued from p. 5

Construction Plan

The Trustees have created a construction plan to build the landscape design. The construction plan includes a number of phases:

- Demolish Existing Landscape
- Excavation for Planting and Rip-Rap
- Design and Build Irrigation System
- Provide and Install Plants and Rocks
- Install Lawn

As of July 21st, we have some bids for the irrigation system and the nursery stock. We will **not** need an irrigation permit or an additional water tap since we can use the existing irrigation water supply installed in 2016 for the parking lot. We are still looking for proposals from vendors to perform the excavation and lawn installation. We are planning to do the demolition work ourselves during and around our upcoming Congregation Work Day on Saturday, September 29th. Based on our experience with the Memorial Outdoor Sanctuary, we can also perform the planting and mulching tasks ourselves to save cost.

Our next steps are to obtain proposals for excavation and lawn installation. Then we will have a handle on the total estimated cost of the project.

Financing

We had a last-minute donation to just cover the remaining cost of the landscape plan invoice (\$1800). Thanks to all members who donated for that and to the Memorials Committee and Endowment Fund which each contributed \$600 toward the landscape plan.

Project construction will be on a pay-as-you-go basis. As we are able to raise funds, we will build the project. Therefore, the pace of this project will be entirely determined by the pace of contributions. We will not be taking out a new loan or extending our existing mortgage. This project is not part of the 2018 church operating budget.

Take a look at the final landscape plan online or in the lobby and contribute toward the realization of our goal to improve our care of God's creation and gifts to us!

Donations should be designated to the **Park Street Frontage Landscape fund**.

UM ARMY continued from p. 1

community, even though it was a lot of work. I also have a FAMILY!! I was so sad that I had to leave everyone at the trip, but I got my friends' snapchats and phone numbers, so I can keep in touch with them.

--Allie Short

What I learned is that community work is a great thing to do. First day we worked at Dripping Springs Paster's house. Removing several loads of brush. The second day work for the host church VBS. It was fun cause we got to paint some shields black. Third day we folded and sorted clothes for Foster Village. Forth day was sad cause we had to pack up and leave for home. Can't wait to do it again next year.

--Abigail Dubler



Tuesday Mornings At Church--Prayer and Bible Study

Submitted by Steve Howard

Each Tuesday morning Church members gather to participate in two important spiritual disciplines--prayer and Bible study. These Tuesday morning traditions have been alive at Cedar Park 1st UMC for years and are open to all Church members and visitors.

The Tuesday Service of Morning Prayer meets at 9:30 a.m. in the Sanctuary, though when weather permits the prayer group may meet in the Memorial Outdoor Sanctuary. The prayer service uses a liturgy. It opens with a call to praise and prayer, followed by a morning hymn, a prayer of thanksgiving, Psalm and scripture readings, prayers of thanksgiving and intercession and a closing hymn. The service lasts only thirty minutes.

There is something special about Church members gathering and praying together. Clara Crank says "this is such a wonderful time to spend praying about family, neighborhood, homeless, church friends and others. We all pray, we all think of others in prayer but this time is so valuable it should be shared by all. I know of times I have started praying and all of a sudden my mind starts to wander but in this group you are connected and you know that God is with us and gives us peace, support and love. "

Tuesday morning lectionary Bible study also meets in the Sanctuary, immediately after the prayer service, beginning at 10 a.m. and lasting for one hour. The lectionary is a three-year cycle of scripture readings that follow the Church calendar and cover most of the Bible during the three years. These are the scriptures we read each Sunday at worship service.

At lectionary Bible study we go deeper learning the historical context of the scriptures. Different Bible translations give us fresh perspectives on the scriptures.

Pastor Peter leads the study and discussion. If you have not observed it in his sermons you will certainly learn what a Bible scholar he is by participating in lectionary Bible study. Pastor Peter has a deep understanding of and passion for teaching the Bible. Most Tuesdays he picks up his Greek New Testament and translates the scriptures from Greek to English for us, revealing additional nuances.

In addition to Peter's teaching we all share what the scriptures say to us and we learn from each other. I learn something new each time we gather.

Prayer and Bible study are two bedrock spiritual disciplines. While they can be done individually they can be deepened in community. To paraphrase Clara Crank again -- come join us and feel the love of your fellow Christians as we all "talk" to God and study His word.

Cedar Park First United Methodist Church, CARE Calendar, Child's Haven Events, Choir, Sep 2018 (Central Time - Chicago)
 CP1UMC Youth, Other Groups, Pumpkin Patch, SCOUTS, United Methodist Men, United Methodist Women

See full calendar online at
<https://cpfumc.org/find-an-event/>

CPFUMC August 2018

Sun	Mon	Tue	Wed	Thu	Fri	Sat
26 8:30am - Worship 9:45am - Sunday 10:45am - Worship 6pm - Youth @	27 2pm - ESL - GED @ 7:30pm - Centering	28 9:30am - Morning 10am - Bible Study 7:30pm - AA Men's	29 9:30am - Powerful 1pm - Easy Line 6:30pm - Buckles	30 9:30am - Tai Chi	31 6:30pm - Alcoholics	1
2 8:30am - Worship 9:45am - Sunday 10:45am - Worship	3 2pm - ESL - GED @ 7:30pm - Centering	4 9:30am - Morning 10am - Bible Study 4pm - GS Troop 6:30pm - TRUSTEES 7:30pm - AA Men's	5 1pm - Easy Line 6:30pm - Buckles	6 9:30am - Tai Chi	7 6:30pm - Alcoholics	8 9am - UMW Meets
9 8:30am - Worship 9:45am - Sunday 10:45am - Worship 6pm - Youth @	10 2pm - ESL - GED @ 6:30pm - FINANCE 7:30pm - Centering	11 9:30am - Morning 10am - Bible Study 7:30pm - AA Men's	12 1pm - Easy Line 6:30pm - Buckles	13 9:30am - Tai Chi	14 6:30pm - Alcoholics	15
16 8:30am - Worship 9:45am - Sunday 10:45am - Worship 3:30pm - Worship @ 6pm - Youth @	17 2pm - ESL - GED @ 6:30pm - COUNCIL 7:30pm - Centering	18 9:30am - Morning 10am - Bible Study 4pm - GS Troop 7:30pm - AA Men's	19 9:30am - Mbrship 1pm - Easy Line 6:30pm - Buckles	20 9:30am - Tai Chi	21 NEWSLETTER Input 6:30pm - Alcoholics	22
23 8:30am - Worship 9:45am - Sunday 10:45am - Worship	24 2pm - ESL - GED @ 7:30pm - Centering	25 9:30am - Morning 10am - Bible Study 7:30pm - AA Men's	26 1pm - Easy Line 6:30pm - Buckles	27 9:30am - Tai Chi	28 6:30pm - Alcoholics	29 9am - Congregation
30 8:30am - Worship 9:45am - Sunday 10:45am - Worship 6pm - Youth @	1 2pm - ESL - GED @ 6:30pm - TRUSTEES 7:30pm - Centering	2 9:30am - Morning 10am - Bible Study 4pm - GS Troop 7:30pm - AA Men's	3 1pm - Easy Line 6:30pm - Buckles	4 9:30am - Tai Chi	5 6:30pm - Alcoholics	6